



LAST UK PERFORMANCE

FEATURING

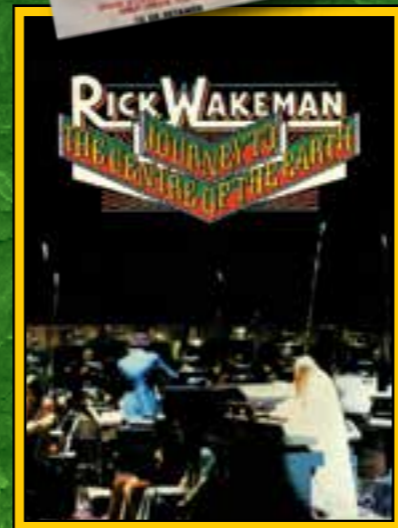
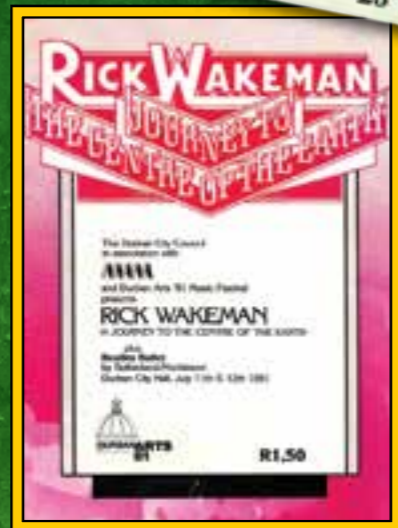
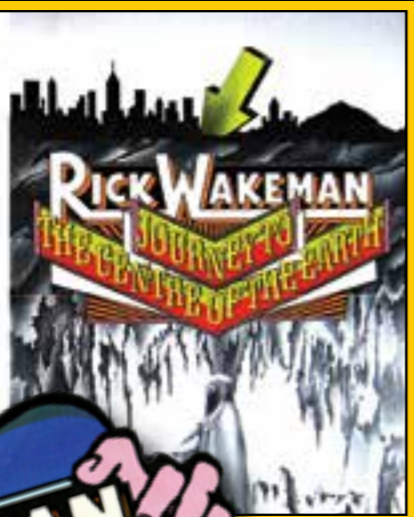
THE ORION ORCHESTRA, THE ENGLISH CHAMBER CHOIR
& THE ENGLISH ROCK ENSEMBLE, CONDUCTED BY GUY PROTHEROE
NARRATED BY ROBERT POWELL, SPECIAL GUEST ALFIE BOE

13TH 14TH JULY 2019

LONDON ROYAL FESTIVAL HALL

On January 18, 1974 at the Royal Festival Hall in London, Rick Wakeman gave the most spectacular concert of his career. With the London Symphony Orchestra and the English Chamber Choir under David Measham, and English actor David Hemmings as narrator, Rick performed his interpretation of Jules Verne's classic fantasy, *Journey To The Centre Of The Earth*...

That remarkable concert is now an extraordinary recording. And in England, where it first took place, it was the number one album in the city with two...



JOURNEY TO THE CENTRE OF THE EARTH

A FEW WORDS FROM THE KEYBOARD PLAYER ABOUT TONIGHT

When I was 20 I often wondered what I would be doing when I was 30 and when I was 30 I wondered what I would be doing when I was 40 and when I was 40 I wondered if I would even make 50 and if so what on earth I would be doing. It turned out it was the same as when I was 20, 30 and 40 and so I naturally presumed it would be the same when I was 50 and then 60 ...and it was. Now, having reached 70, I am pleased to say that nothing has altered, apart that is from a body shape change, additional wrinkles, up a few more times during the night, extreme grumpiness and a total lack of exercise. Long live Prog Rock, that's what I say.

These very special concerts are my birthday present to myself. *Journey to the Centre of the Earth* has been a massive part of my life and so I could think of nothing better than to take the piece back to where it all began, the Royal Festival Hall where in 1974 we did a matinee performance and then an evening performance.

The original performance was just 36 minutes long with a six minute encore. Tonight will be 110 minutes long with a 25 minute encore (if you, the audience are kind enough to want one).

We have added relevant music from *Return to the Centre of the Earth* with additional narrative, solos and guest appearances from Robert Powell as our narrator and my great friend Alfie Boe singing two especially adapted songs from *Return*.

It is fantastic to have Ashley Holt with us

tonight as he will be the only person on stage, (apart from me), who was a part of the original performances. His partner in vocal crime that night, Gary Pickford-Hopkins, is sadly no longer with us and on the 2014 UK tour, Hayley Sanderson joined us and sang those original songs of Gary's plus two new ones which she immediately "made her own".

Tony Fernandez, on drums, joined the English Rock Ensemble in 1975 and has been an integral part of the set up ever since. He and Matt Pegg, who joined in 2014, have formed a relationship in the rhythm section that is second to none (in getting to the bar).

On guitar is the highly acclaimed Dave Colquhoun who alongside myself, can name Brian May amongst his many admirers.

For these performances, I have brought in Adam Wakeman to assist with additional keyboard, acoustic and electric guitar parts. There is a very good reason for this. Unlike many complicated performances which involve so many people on stage, we do not use any pre-recorded material or clicks in

headphones or ear-pieces. Everything you will see and hear tonight is performed live, which makes the conductor's task extremely tough. It is down to him to give the necessary cues to everybody. There are more than 70 crucial cues in the piece, so we have a nurse standing by for Guy Protheroe, trusty friend and stick waver for many years.

We re-recorded *Journey to the Centre of the Earth* as a studio production back in 2012 in order to put in the missing music that was never

THE JOURNEY CONTINUES OVERLEAF...



I COULD THINK OF NOTHING BETTER THAN TO TAKE THE PIECE BACK TO WHERE IT ALL BEGAN



JOURNEY TO THE CENTRE OF THE EARTH

in the original recording due to limitations of vinyl records. That gave us the opportunity to add quite a few additional guitar and keyboard parts. Dave Colquhoun and I have only one pair of hands each and so it was either cherry pick the parts to play live or bring in another musician who could cover the additional parts, that's why Adam is appearing with us.

The English Chamber Choir have been associated with me for nearly 50 years and try as they might, they can't get rid of me. They are great to work with and Guy and Ann Protheroe have become firm friends. The same is true of the Orion Orchestra, which is admirably looked after by Jan Cassidy who has also become a firm friend.

You are probably getting the message now that I only like to work with people I like and who have become friends. That is exactly why this production works, because everybody involved wants to make it work. That very much includes the fantastic crew, I have to single out Erik Jordan who is our recording engineer as well as the chief keyboard technician (actually he's the only keyboard technician).

One other person who is involved tonight was

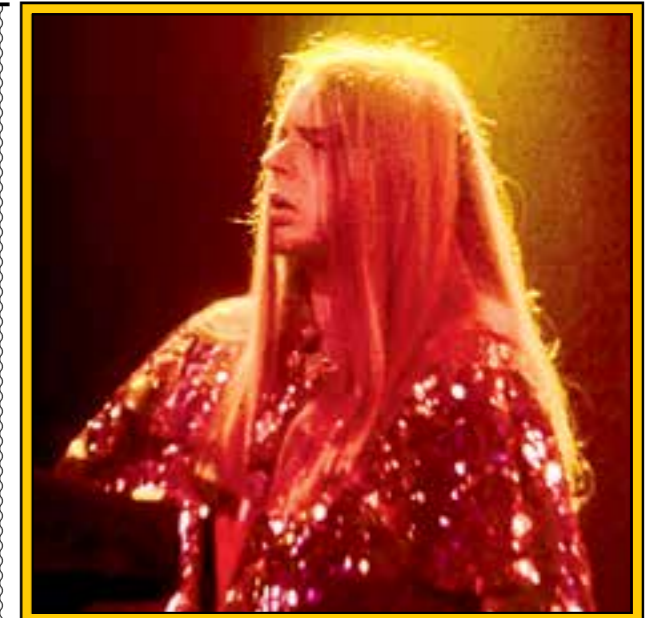


PHOTO: BOB HASKINS

a part of the original team back in 1974 and that is my manager Brian Lane who played a major part back then in ensuring that the concert actually happened. Brian and Valerie in the office have managed to keep everything on track to enable us to be here on stage.

Finally, a big thank you to Mark Dawson our production manager. He has the patience of Job and understands my bizarre requests.

There are so many others I could thank, but I've been given limited space to write this and so apologies if you've not been mentioned, but I'm running out of space...

A FEW WORDS FROM THE 2014 TOUR PROGRAMME:

In 1981 I was asked to perform *Journey* in Brazil again but when we came to check out the orchestral music in the flight-cases, they were empty and to this day, along with all the orchestral music for *King Arthur*, have never been found. As this was before the time of computers and electronic data storage, no

THE JOURNEY CONTINUES OVERLEAF...





JOURNEY TO THE CENTRE OF THE EARTH

copies existed anywhere. As a result, no further performances ever took place, in spite of repeated requests from all over the world. This meant that it did seem that *Journey* had seen its last performance and would forever have only the three performances in the UK to remember.

In 2009 a very battered and water damaged conductor's score appeared in a packing case that arrived out of the blue from Australia, and immediately restoration work was carried out over a period of two years by the conductor and musicologist, Guy Protheroe, with the original score carefully transcribed onto Sibelius computer software.

This meant that after more than 35 years, *Journey to the Centre of the Earth* was able to be performed once again. However, the story did not end here, as there was yet another twist to the tale.

The original music was intended to be around 55 minutes, but as A&M Records did not want a double album, it became a single album length of around 36 minutes. Upon the discovery of the missing score, I decided that it was the perfect opportunity to bring the work up to its original length.

I still had all my original notes from 1973 and quite detailed ideas for the two missing songs and additional narrative as well as the extended instrumental and solo passages. With my engineer Erik Jordan, we put together the full length version and that's what you'll be hearing tonight, but with a few extra surprises thrown in!

All of the original score is included and unchanged plus all the additional music is written and performed so as to blend in perfectly with the style and feel of the original.

A FEW WORDS FROM THE 1975 TOUR PROGRAMME:

Work on the *Journey to the Centre of the Earth* actually started in November 1971, but was shelved until the completion of *The Six Wives of Henry VIII* in October 1972. The work was written for full symphony orchestra and choir and is in no deliberate way intended to be an attempt to fuse group and orchestra. In fact, for no length of time are the two actually playing together; however, I believe very strongly that the correct use of orchestra, choir and group, can add phenomenal colour in presenting a work such as this. The narrations and visual effects are simply to make the music as meaningful to the listener as it is to the performer.

There's a quote about Rick Wakeman's solo work that suitably sums up this amazing man for all sessions. It comes from *NME*'s Tony Tyler, and is in the context of his glowing appreciation of the "live" debut of Rick's *Journey to the Centre of the Earth*, staged at London's Royal Festival Hall

in January of 1974.

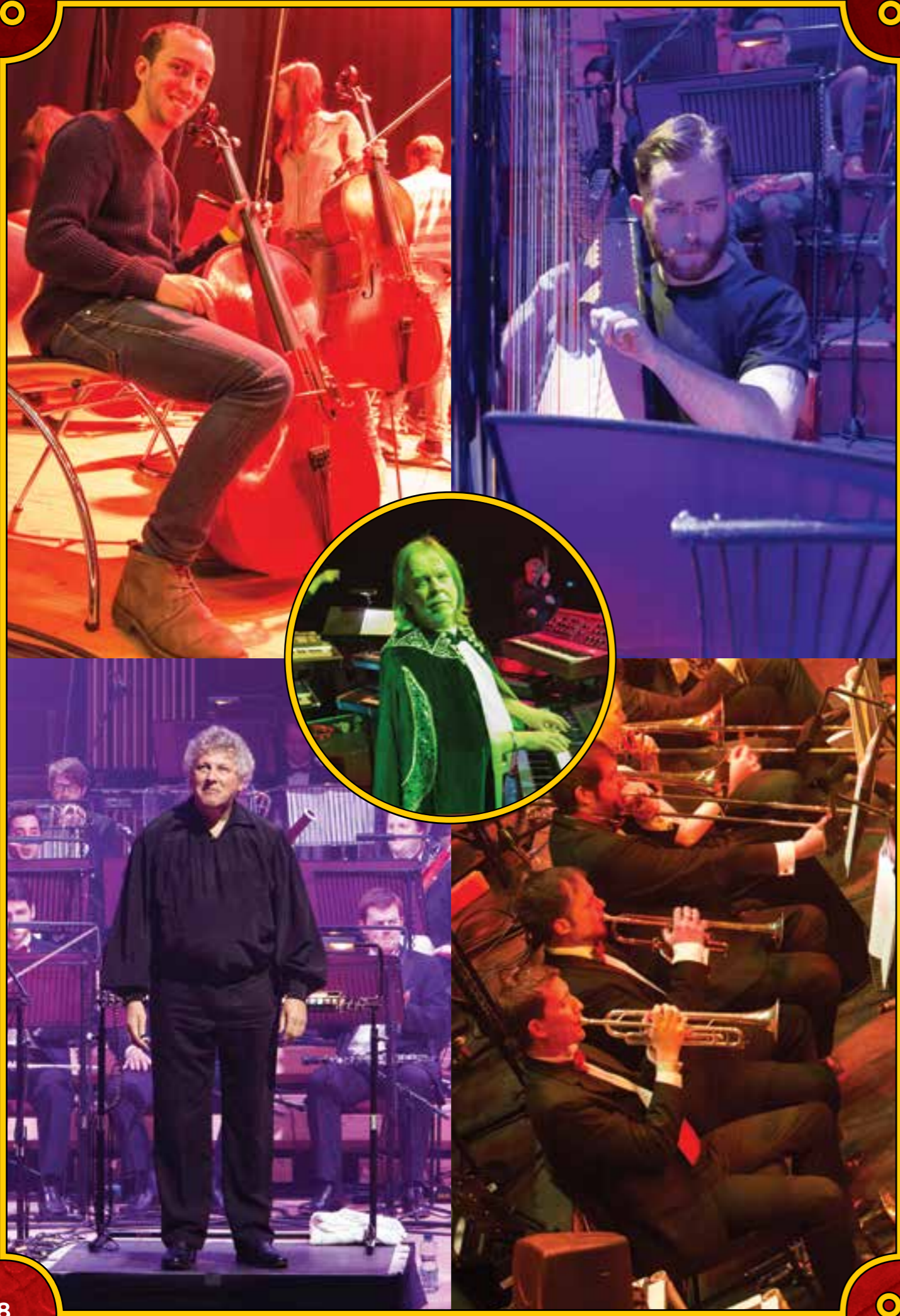
Tyler was talking about Rick being a confirmed romantic; and had touched upon his quasi-"classical" contemporaries, including Yes, of whom he has been an integral part.

Said Tony: "His solo efforts display more discipline, more humanity, more humour, and a damn sight less pretentiousness than the collected works of all those groups rolled into one six album set..." And indeed they do! Rick Wakeman has all these attributes, and more –

THE JOURNEY CONTINUES OVERLEAF...



NO FURTHER PERFORMANCES EVER TOOK PLACE IN SPITE OF REPEATED REQUESTS



JOURNEY TO THE CENTRE OF THE EARTH

both as a performer and as a person. Four years ago, he was hailed as “Tomorrow’s Superstar” and “The Pop Find of the Year”. Today, this friendly, inoffensive young man has achieved and honoured both of these accolades.

His debut solo work *The Six Wives of Henry VIII* was warmly received. His follow-up, the musical interpretation of the Jules Verne classic, has added to these already numerous plaudits.

In the music papers’ poll awards for 1973 and 1974 Rick was rated No. 1 keyboards star on both sides of the Atlantic.

Wakeman had decided to become a concert pianist at 16, and went to the Royal Academy of Music for 18 months to further that ambition. He studied piano, clarinet and orchestration and was exposed to various other keyboard instruments. Later he taught music for a while and took a few private pupils. And he also started doing sessions for people like Cat Stevens, T. Rex and David Bowie.

Rick was gigging in a pub when he met the Strawbs’ leader Dave Cousins. His first tour for them was also his honeymoon with his wife, Ros. Rick played for the Strawbs for 15 months, then quit to resume his lucrative session work, but it wasn’t long before he was invited to join Yes.

Rick is undoubtedly the finest rock pianist to emerge in recent years. Even at his most explosive, his style remains focused, his approach direct.

Wakeman’s gift is that his virtuosity can either interact cleverly within a group context – or easily produce an unfettered and entrancing keyboard solo.

That’s Rick Wakeman – a man for all sessions!

APPEARING THIS EVENING: THE ORION SYMPHONY ORCHESTRA

The Orion Orchestra has rapidly built a reputation as one of the most dynamic orchestras on the UK’s music scene. The orchestra exists to promote the best young musicians in the country, with its performances recognised for their vitality, energy, and imaginative programming.

With Orion’s players selected from the most talented music college students and recent graduates, it gives its members the experience of working at all of London’s leading concert venues, as well as a platform for especially talented young soloists.

As orchestra in residence at the Aberystwyth International MusicFest, the orchestra provides unique experience to student conductors and composers. Since its formation in 2005 the Orchestra has performed with notable soloists which include Joanna MacGregor, Julian Lloyd Webber, Guy Johnson, Tasmin Little, Susan Gritton, Anne Murray and Dennis O’Neill,

Nicola Benedetti, Valeriy Sokolov, Jack Liebeck and Charlie Siem, pianists Teo Georghiu, Tom Poster, percussionist Martin Grubinger, cellist Guy Johnston, tenor Jesus Leon and soprano Susan Gritton and Laura Mitchell.

Orion’s repertoire embraces a wide range of genre, style and skills that its musicians will need in later professional orchestras, with music from Austria to Azerbaijan and encompassing symphonic, opera, contemporary, Middle-Eastern and Latin-American music.

THE JOURNEY CONTINUES OVERLEAF...



**RICK IS
UNDOUBTEDLY
THE FINEST
ROCK PIANIST
TO EMERGE IN
RECENT YEARS**



JOURNEY TO THE CENTRE OF THE EARTH

In 2014 Paul Mann conducted the Orion Orchestra in a sold out memorial concert for Jon Lord at the Royal Albert Hall. Artists included Deep Purple, Rick Wakeman, Paul Weller, Glen Hughes, Bruce Dickinson, Bernie Marsden, Micky Moody and other Rock n Roll legends.

The Orion Orchestra has a vision and intention to support young musicians, giving them a platform to hone their skills in concerts like these and also to inspire young children to attend Live concerts conducted and presented by Sue Perkins.

The orchestra has a great working relationship with Rick Wakeman who uses them on all his current recordings and is Patron of the associated Marylebone Music Festival alongside Sue Perkins and Founder/Artistic Director Meghan Cassidy.

GUY PROTHEROE, CONDUCTOR

Guy Protheroe was born in Worcester where (before he arrived) his parents were briefly next-door neighbours of Elgar! He began his musical education as a chorister at Canterbury Cathedral

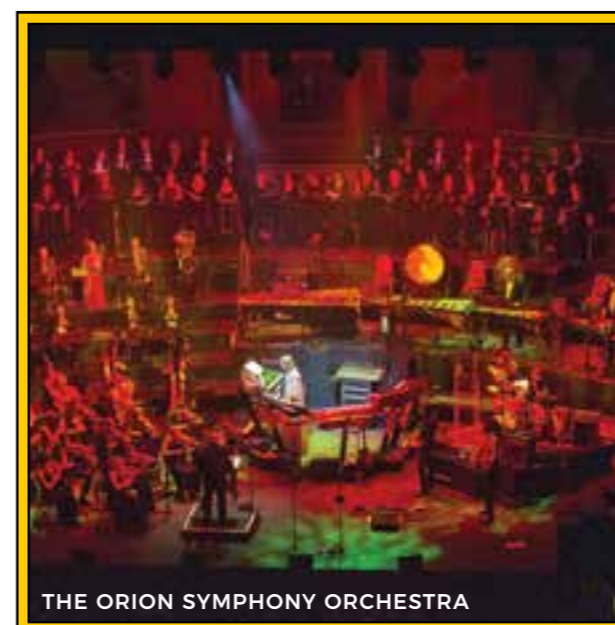


GUY PROTHEROE

and was a music scholar at Magdalen College, Oxford. After post-graduate studies at the Guildhall School of Music he formed his own contemporary music group, Spectrum, became chorus-master and shortly afterwards conductor of the English Chamber Choir, and worked extensively in the commercial music business as musical director to a whole host of artists including Rick Wakeman.

He was chorus-master for the first performance of *Journey to the Centre of the Earth* in 1974, and conducted the 40th anniversary UK tour of the same album, followed by more performances in Argentina and Brazil.

He has appeared as guest conductor with many ensembles, orchestras and choirs around the world including, most recently, Cappella Romana, the elite chamber choir specialising in Orthodox music, based on the west coast of the US in Portland, Oregon, and the Orion Orchestra at the Queen Elizabeth Hall. Guy is also one of the UK's leading forensic experts on issues relating to music copyright.



THE ORION SYMPHONY ORCHESTRA

THE JOURNEY CONTINUES OVERLEAF...



JOURNEY TO THE CENTRE OF THE EARTH



THE ENGLISH CHAMBER CHOIR

THE ENGLISH CHAMBER CHOIR

The English Chamber Choir is based in the City of London, where it rehearses regularly at the Church of St Andrew-by-the-Wardrobe, near Blackfriars. Locally it participates in events at the Mansion House and for City Livery Companies, has sung in the premiere of a work by John Tavener in St Paul's Cathedral, and has given concerts in the Barbican.

Elsewhere in London it appears regularly with the Belmont Ensemble at St Martin-in-the-Fields, at the South Bank, St John's Smith Square and several other churches and prominent music venues. It has sung for HM The Queen at Buckingham Palace and Windsor Castle.

The Choir has a long history of involvement with commercial music; it sang in the first performance and the recording of Rick Wakeman's *Journey to the Centre of the Earth* at the Royal Festival Hall in January 1974, and in May 2014 completed the 40th anniversary UK tour including two appearances at the Royal Albert Hall. (There are a few singers this evening who took part in the original *Journey*...

in 1974.) It sang on the original *King Arthur* album and in the shows on ice at the Empire Pool Wembley in 1975.

More recently, the Choir took part in the live shows and DVD recording of *Six Wives of Henry VIII* at Hampton Court, and the revival of *King Arthur* at the O2 Centre in June 2016. They have appeared with Rick (or indeed Rick has appeared with them) in numerous other smaller-scale shows and charity events. The Choir has also worked with Vangelis, Eric Levi (the Era project), Procol Harum (here at the RFH and also the London Palladium) and many other international artists and it has numerous radio and TV credits.

Recently it has appeared several times at the Royal Albert Hall in screenings of live music to film with the Royal Philharmonic Concert Orchestra and the BBC Concert Orchestra in movies including *Gladiator*, *Close Encounters of the Third Kind*, and the first two Harry Potter films. Further afield the Choir has toured in Belgium, Bulgaria, France and Switzerland, and appeared in Plovdiv (Bulgaria) and the

THE JOURNEY CONTINUES OVERLEAF...





JOURNEY TO THE CENTRE OF THE EARTH

Megaron, Athens Concert Hall. Last summer the Choir was the first British group to sing at the prestigious Festival of Sacred Music in Patmos, Greece.

ASHLEY HOLT, VOCALS

Born 13th Feb 1946 in Amersham, Bucks Ashley first became interested in music through being head choir boy but it was when he heard a local rock 'n' roll singer Roy Powell through the window of a local bar that he became hooked.

He asked his Dad for a guitar for Christmas and he formed a band, The Delmars, with school friends playing rhythm guitar and won several awards including *The Evening News* "Best New Band" contest.

He joined Ronnie Smith's Big Band on the Top Rank circuit as lead singer. It was here that a 17 year old lanky, long haired, blond kid came for an audition as an organ player. Ashley persuaded the band leader to give the kid a chance and Rick Wakeman became the newest Top Rank musician.

Their friendship was cemented on a mutual love of music and stupidity of life, and it was



HAYLEY SANDERSON

when Rick left Yes to forge a solo career that Ashley, who at the time was the front man for Warhorse, a Deep Purple spin-off band, became the first person to be called up for *Journey to the Centre of the Earth* as he was indeed for the current recording.

World tours followed and the next concept album, *King Arthur and the Knights of the Round Table*, saw Ashley once again at the forefront of prog rock.

The album *No Earthly Connection* was written with Ashley's vocals in mind with tracks such as *The Realisation* and *The Spaceman* really showcasing his amazing vocal range and ability. 40 years have passed since Rick and Ashley first worked together and they still share that friendship and that same love of music and stupidity of life in general.

HAYLEY SANDERSON, VOCALS

Hayley Sanderson is generally considered to be one of the finest vocalists on the London scene today and is certainly one of the most in-demand



ASHLEY HOLT

THE JOURNEY CONTINUES OVERLEAF...



JOURNEY TO THE CENTRE OF THE EARTH



PHOTO: ANNEMARIE TEN KATE

ADAM WAKEMAN

Movies. Co-written with Jamie Scott from Graffiti 6, who also co-wrote *Fly* for the album. While currently promoting her new band, The Stylophones, she has had her first commercial success, a co-write with Mark Hudson for the vocalist Peter Grant which was used on Noel Clarke's latest film, *The Knot!*

Aside from being a very skilled musician she is a highly charismatic performer, whose joy and enthusiasm for music make her concerts infectious and hugely enjoyable.

ADAM WAKEMAN, KEYBOARDS AND GUITAR

Born in a flightcase on 11th March 1974, Adam has continued the musical path his father has trodden for so many years. After eight albums with his father Rick, and four solo albums to his name, he started working on the London session scene and has played on hundreds of recording sessions, including the recent Grammy award winning artist Stormzy's platinum selling record *Gang Signs & Prayer*. He has toured with

THE JOURNEY CONTINUES OVERLEAF...

freelance singers. Her versatility has kept her working constantly since she moved to London in 2001.

Already her CV reads like a who's who of music ranging from artists as diverse as Narada Michael Waldon/Nile Rodgers to Will Young/Gloria Gaynor and collaborations with Gilbert O'Sullivan (*Duet Here's Why* on his last album) and the Swiss Harpist, Andreas Vollenweider.

Sanderson was the resident singer at the world famous 'Ronnie Scotts' club, in Soho for three years, whilst recording and writing for other artists and advertisement campaigns including 'British Telecom'. The success of that campaign led to a single being released that climbed the charts, *Something in the Air*.

Hayley is now the regular singer on the BBC's *Strictly Come Dancing* and has been for the past five years. Singing live on prime time TV every Saturday night has created highly acclaimed press attention leading her to release her very beautiful and intimate debut album *Just Songs* featuring Rick Wakeman and Mitch Dalton (Studio Kings).

She was lucky enough to record an unreleased song by Ron Sexsmith called *Blood Stained*



MATT PEGG



JOURNEY TO THE CENTRE OF THE EARTH

Travis, Annie Lennox, Take That, Olly Murs, Slash, (to mention a few) and for the past 17 years has played every show with Black Sabbath.

Adam has been a permanent fixture in Ozzy Osbourne's band since 2003, also having co-written Ozzy's last Grammy nominated album *Scream*.

MATT PEGG, BASS

Matt is the son of Fairport Convention and Jethro Tull bassist Dave Pegg. He is also an experienced bass player in his own right, standing in for his father on Tull tours.

Dave began his professional career in 1987, aged 16, with the band Blinder. Blinder played two very successful support slots with the band It Bites, which brought Pegg to the attention of his future employer Francis Dunnery. Matt appeared on Dunnery's *Man* album in 2001, and played with him on his *Hometown* tour.

Since 1993 Matt has been a member of Procul Harum; touring with them regularly and appearing on their recent *The Well's On Fire* album and *Live at the Union Chapel* DVD.



DAVE COLQUHOUN

PHOTO: JOSIE COLQUHOUN

TONY FERNANDEZ, DRUMS

Born in London a very, very, very, long time ago (in the same year as Rick!)... started playing drums a very, very, long time ago... began working with Rick a very long time ago, 1975 to be exact.

Recent years have seen Tony diversify and split his time between the UK and The Algarve – which is a wonderful place to be! Tony still very much enjoys the opportunity to venture out with Rick and the English Rock Ensemble (plus the occasional orchestra) to do a few concerts here and there. He also plays the odd gig with Ruthless Blues, as well as touring with The Strawbs. Long may this continue!



TONY FERNANDEZ

DAVE COLQUHOUN, GUITAR

Dave has been guitarist with Rick Wakeman and the English Rock Ensemble since 2002. Originating from Whitehaven in Cumbria he has also worked alongside: Bow Wow Wow, Brian May, Ian Brown, Procul Harum, Go West, Gareth Gates, Bananarama, DBA, Willy Finnlaysonn, Belinda Carlisle, The Fizz,

THE JOURNEY CONTINUES OVERLEAF...



JOURNEY TO THE CENTRE OF THE EARTH



ALFIE BOW

Decker and Francis Dunnery.

Dave was *Guitarist Magazine's* "Guitarist of the Year" 1994/5 and also a proud Member of the Grand Order of Water Rats.

ALFIE BOE, GUEST VOCALS

As a young boy, Lancashire-born Alfie, from the fishing port of Fleetwood, dreamed of a career as a singer. Having conquered the world's most prestigious opera stages, led the cast of *Les Miserables* for nearly a year, and stolen the show at the Queen's Diamond Jubilee Concert at Buckingham Palace, he has certainly succeeded.

Always striving to bring good music to different audiences, after three sold-out UK Tours, including the Royal Festival Hall and the Royal Albert Hall, Boe has hundreds of thousands of fans, achieving Platinum album sales in the UK, and four top ten album placings.

ROBERT POWELL, NARRATOR

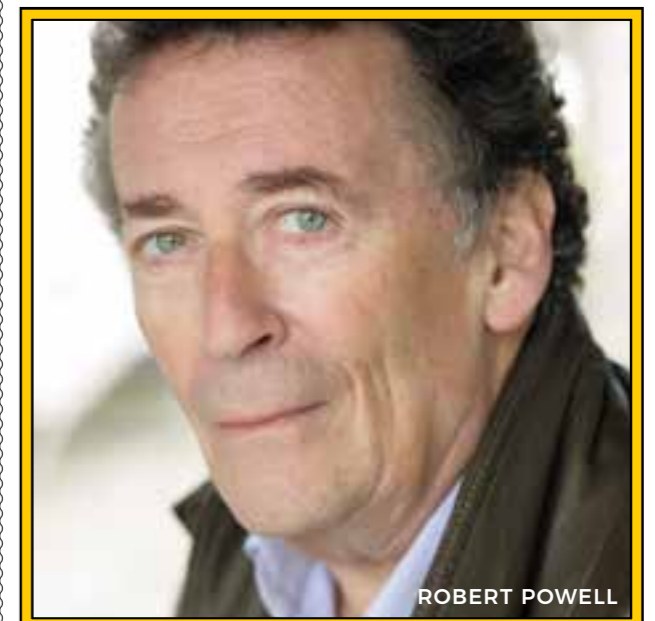
Robert was born on Thursday, 1st June, 1944, in Salford, Manchester. In 1964, he started his acting career while attending Manchester

University. In 1967, he made his film debut, and later landed his first starring role in *The Italian Job*).

Some of his well-known movies include Franco Zeffirelli's *Jesus of Nazareth*, Ken Russell's *Tommy* and *Mahler* and the popular TV series, *Doomwatch*.

Powell's distinctive voice is frequently heard on voice-overs, advertisements and as a narrator of television programmes. He read the novel *Love in the Time of Cholera* by Gabriel García Márquez for BBC Radio 4's *Book at Bedtime*, and has also narrated many audio books including *The Thirty Nine Steps*. Powell has lent his voice to musical works, such as the 2002 rock opera *The Hound of the Baskervilles*, by Clive Nolan and Oliver Wakeman.

Robert also narrated on two rock albums by Rick Wakeman called *Cost of Living* and *The Gospels*. On Easter Sunday 1st April 2018, he appeared in a Smithsonian Channel Documentary Series based on his portrayal of the Franco Zeffirelli mini-series *Jesus of Nazareth* entitled, *The Real Jesus of Nazareth*, narrated by Judd Hirsch.



ROBERT POWELL

PLEASE HELP THESE CHARITIES

Rick is a long-standing patron of the animal charities featured on these pages. Your help and support for them would also be greatly appreciated.

OLDHAM CATS



Oldham Cats is a UK registered charity dedicated to rescuing and

re-homing stray, abandoned and unwanted cats and kittens. We have been helping cats in and around the Oldham, Rochdale and Middleton areas of Greater Manchester, since 1995 and gained our charity registration in October of the following year. Since 1998 we have been based at our rescue in Middleton.

We find homes for hundreds of homeless and abandoned cats and kittens every year, and we need your help to continue to do so. We are a non-profit, totally volunteer run organisation and rely entirely on the support of our loyal volunteers, fundraisers and supporters.

We often get asked why we put so much work into rescuing and looking after cats and the only answer is... because we care. Our dedicated team work seven days a week, 365 days a year ensuring the cats and kittens in our care are getting the best possible attention. Making a donation no matter how small will help provide much-needed funds towards food, medicines and veterinary care.

www.oldhamcats.co.uk

FELINE CARE



Our purpose built Cat Rescue Centre is set in three acres of rural and tranquil cat paradise! We offer all our cats a loving home with the hope of finding them their very own 'forever' home. At Feline Care we are not afraid to take on more difficult cases and pride ourselves on our

therapeutic work with feral and nervous cats.

The main facility comprises large communal living areas and is uPVC double-glazed with under floor heating. We also have a well equipped Intensive Care Unit for poorly cats and nervous cats who require special handling. Our Jellicle pens give feral cats a secure temporary home while recovering from their operations as part of our 'neuter and return' scheme.

As part of our dedication to the happiness of our residents we rely almost entirely on volunteers. This guarantees that every person working with the cats is here because they love them thus ensuring big purrs all round.

We always have room for more volunteers, so please get in touch with us if you have a spare morning to donate... cats can never have enough cuddles!

Please browse our website and please let us know if you have any comments or queries.

www.felinecare.org.uk

FRIENDS OF THE ANIMALS



Started in the second floor flat of its founder, Helen Sinclair. For twenty-seven years we have been improving the lives of animals from Burnley to the Isle of Wight and from Norfolk to Wales.

Our aims are to: ■ Offer a subsidised Spaying and Neutering scheme ■ To rehome animals that come into our care ■ To support 460+ animals at a Sanctuary in the Midlands ■ To give educational talks on the care of pets ■ To offer support for members of the public in the care of their pets ■ We have also: Spayed/Neutered more than 34,000 animals ■ Rehomed over 8,800 animals ■ We provide veterinary treatment for almost 4,000 animals every year.

www.friendsoftheanimals.co.uk

JOURNEY TO THE CENTRE OF THE EARTH

PLEASE HELP THESE CHARITIES

ANIMALS ASIA



I was introduced to Animals Asia by Peter Egan back in 2011 and ever since then I've been in awe of the work Jill Robinson and her team do.

I can't think of a crueller form of animal abuse than bear bile farming. Moon bears are confined for years in tiny cages, offering no moment of respite from excruciating pain, where they eventually die. Since they were cubs, they will have had crude, agonizing catheters in their abdomens and been kept in a perpetual state of hunger and dehydration to maximise bile production. The 11,200 bile bears in China and

Vietnam must yearn for death, but Animals Asia offers them hope and have rescued around 600 bears to date. The bears are crushed in body and spirit and for the lucky ones that are rescued by Animals Asia, it can be a long road to recovery. But Jill's team has some of the best and most specialised bear vets in the world who use their tremendous skills and compassion to give tireless support and love to the bears. Piece by piece, they put the bears back together, physically and psychologically, and then provide safe sanctuary to them for the rest of their days.

I have always been proud to support the charity and it's been such a pleasure to be able to help. **Rick Wakeman**

www.animalsasia.org

WAKEMAN'S MUSIC EMPORIUM

OFFICIAL JOURNEY TO THE CENTRE OF THE EARTH MERCHANDISE AVAILABLE

<p>£10 EACH</p> <p>RETURN AND 2014 JOURNEY</p>	<p>£20</p> <p>EVENT T-SHIRT</p>	<p>£25</p> <p>VINTAGE SHIRT</p>	<p>£10</p> <p>MUG</p>
<p>£10</p> <p>TOTE BAG</p>	<p>£15</p> <p>PROGRAMME - WITH CD</p>	<p>£10</p> <p>'UNLEASHING'... LIVE CD</p>	<p>£50</p> <p>LIMITED EDITION SIGNED PRINT</p>

Exclusively available from www.musicglue.com/rick-wakeman-emporium

JOURNEY DISCOGRAPHY

JOURNEY TO THE CENTRE OF THE EARTH - RELEASES WORLDWIDE



- | | | | | | |
|---|--|--|--|---|--|
| JOURNEY TO THE CENTER OF THE EARTH
Vinyl, Gatefold Sleeve
A&M AMLH 63621
UK 1974 | JOURNEY TO THE CENTRE OF THE EARTH
Vinyl, Gatefold Sleeve
A&M AMLH 63621
SOUTH AFRICA 1974 | JOURNEY TO THE CENTRE OF THE EARTH
Vinyl, Gatefold Sleeve
A&M AMLH 63621
SCANDINAVIA 1974 | JOURNEY TO THE CENTRE OF THE EARTH
8-Track Cartridge
A&M 8T-3621, 95801
US 1974 | JOURNEY TO THE CENTRE OF THE EARTH
8-Track Cartridge
A&M YAM 63621
UK 1974 | JOURNEY TO THE CENTRE OF THE EARTH
8-Track Cartridge
A&M 8T-3621
ITALY 1974 |
| JOURNEY TO THE CENTRE OF THE EARTH
Compact Cassette
A&M CS-88-329
VENEZUELA 1974 | JOURNEY TO THE CENTRE OF THE EARTH
Compact Cassette
A&M CAM 63621
UK 1974 | JOURNEY TO THE CENTRE OF THE EARTH
Compact Cassette
A&M CAM 63621
UK 1974 | JOURNEY TO THE CENTRE OF THE EARTH
Compact Cassette
A&M AMC-3621
CANADA 1974 | JOURNEY TO THE CENTRE OF THE EARTH
Vinyl
A&M SVAS-95801
US 1974 | JOURNEY TO THE CENTRE OF THE EARTH
Vinyl
A&M ARIOLA 87 745 XOT
GERMANY 1974 |
| JOURNEY TO THE CENTRE OF THE EARTH
Vinyl
A&M SP-3156
US 1974 | JOURNEY TO THE CENTRE OF THE EARTH
Vinyl
A&M SP-3156-1
PORTUGAL 1974 | JOURNEY TO THE CENTRE OF THE EARTH
Vinyl
FESTIVAL, A&M L 35172, AMLH 63621
NEW ZEALAND 1974 | JOURNEY TO THE CENTRE OF THE EARTH
Vinyl, Club, Gatefold Sleeve
A&M SP-3621, SP-3621
CANADA 1974 | JOURNEY TO THE CENTRE OF THE EARTH
Vinyl, Club, Gatefold Sleeve
COLUMBIA, CORD CLUB SP-3621
US 1974 | JOURNEY TO THE CENTRE OF THE EARTH
Vinyl, Club, Gatefold Sleeve
COLUMBIA, CORD CLUB SP-3621
US 1974 |
| JOURNEY TO THE CENTRE OF THE EARTH
Vinyl, Gatefold Sleeve
A&M SP-3621
GUATEMALA 1974 | JOURNEY TO THE CENTRE OF THE EARTH
Vinyl, Gatefold Sleeve
A&M AMLH 63621
FRANCE 1974 | JOURNEY TO THE CENTRE OF THE EARTH
Vinyl, Gatefold Sleeve
A&M, ARIOLA CO 87 745 XOT
GERMANY 1974 | JOURNEY TO THE CENTRE OF THE EARTH
Vinyl, Gatefold Sleeve
A&M AMLH 63621
UK 1974 | JOURNEY TO THE CENTRE OF THE EARTH
Vinyl, Gatefold Sleeve
A&M AMLH 63621
FRANCE 1974 | JOURNEY TO THE CENTRE OF THE EARTH
Vinyl, Gatefold Sleeve
A&M XBL 985 003, 985 003
FRANCE 1974 |
| JOURNEY TO THE CENTRE OF THE EARTH
Vinyl, Gatefold Sleeve
A&M 63621, 87 745 IT
NETHERLANDS 1974 | JOURNEY TO THE CENTRE OF THE EARTH
Vinyl, Gatefold Sleeve
A&M LPS-88-329
VENEZUELA 1974 | JOURNEY TO THE CENTRE OF THE EARTH
Vinyl, Gatefold Sleeve
A&M SA&M 2121, SA&MX 2121
BRAZIL 1974 | JOURNEY TO THE CENTRE OF THE EARTH
Vinyl, Gatefold Sleeve
A&M AMLH 63621
NETHERLANDS 1974 | JOURNEY TO THE CENTRE OF THE EARTH
Vinyl, Promo
A&M SP-3621
US 1974 | JOURNEY TO THE CENTRE OF THE EARTH
Vinyl, Quad, Gatefold Sleeve
A&M, SA&M 2121, QA&MX-2121
BRAZIL 1974 |
| JOURNEY TO THE CENTRE OF THE EARTH
4tr Stereo, Vinyl
A&M OR-3621
US 1974 | VIAJE AL CENTRO DE LA TIERRA
Vinyl, Gatefold Sleeve
A&M SA&M-30053
CHILE 1974 | VIAJE AL CENTRO DE LA TIERRA
Vinyl
A&M 8065/28065
PERU 1974 | VIAJE AL CENTRO DE LA TIERRA
Vinyl, Gatefold Sleeve
A&M 8065/28065
ARGENTINA 1974 | JOURNEY TO THE CENTRE OF THE EARTH
Vinyl
A&M AMLH 63621
TURKEY 1975 | JOURNEY TO THE CENTRE OF THE EARTH
Vinyl, Gatefold Sleeve
A&M AMLH 63621
SPAIN 1977 |
| JOURNEY TO THE CENTRE OF THE EARTH
Vinyl
HALLMARK RECORDS SHM 3164
UK 1985 | JOURNEY TO THE CENTRE OF THE EARTH
Compact Disc
A&M D32Y3095
JAPAN 1986 | JOURNEY TO THE CENTRE OF THE EARTH
Vinyl
PCP RTB, A&M 2223341, SP-3156
YUGOSLAVIA 1986 | JOURNEY TO THE CENTRE OF THE EARTH
Vinyl, Promo, Gatefold Sleeve
A&M 2223341, SP-3156
JAPAN 1986 | JOURNEY TO THE CENTRE OF THE EARTH
Vinyl
PCP RTB, A&M 2223341, SP-3156
YUGOSLAVIA 1986 | JOURNEY TO THE CENTRE OF THE EARTH
Vinyl
A&M 393 156-1
SPAIN 1986 |
| JOURNEY TO THE CENTRE OF THE EARTH
Compact Disc
MOBILE FIDELITY MFCD 848
US 1990 | JOURNEY TO THE CENTRE OF THE EARTH
Compact Disc, Ltd Edition
MOBILE FIDELITY MFCD 848
JAPAN 1990 | JOURNEY TO THE CENTRE OF THE EARTH
Compact Disc
SPECTRUM MUSIC 2 550 0612
EUROPE 1993 | JOURNEY TO THE CENTRE OF THE EARTH
Compact Disc
MOBILE FIDELITY LAB UDCC 633
US 1995 | JOURNEY TO THE CENTRE OF THE EARTH
Vinyl, Ltd Edition
MOBILE FIDELITY MFSL 1-230
US 1995 | JOURNEY TO THE CENTRE OF THE EARTH
Compact Disc, Unofficial
MASTED 2 RW CD 003
RUSSIA 1996 |
| JOURNEY TO THE CENTRE OF THE EARTH
Compact Disc, Vinyl, Box set
A&M 5363450
UK & EUROPE 2016 | JOURNEY TO THE CENTRE OF THE EARTH
Compact Disc, Quad
A&M 5363456
UK 2016 | JOURNEY TO THE CENTRE OF THE EARTH
Compact Disc
A&M 5363459
UK 2016 | JOURNEY TO THE CENTRE OF THE EARTH
CD, SHM + DVD-V, Quad
A&M UICY-7779
JAPAN 2016 | JOURNEY TO THE CENTRE OF THE EARTH
Vinyl
A&M 5363460
EUROPE 2016 | JOURNEY TO THE CENTRE OF THE EARTH - EXTENDED
2 x Vinyl
MUSIC FUSION MFWN1LP
EUROPE 2014 |
| JOURNEY TO THE CENTRE OF THE EARTH
Compact Disc
A&M D 19141
AUSTRALIA - NO DATE | JOURNEY TO THE CENTRE OF THE EARTH
Compact Disc
A&M, A&M 393 621-2, CD CMID161
UK & EUROPE - NO DATE | JOURNEY TO THE CENTRE OF THE EARTH
Compact Disc
A&M 393 156-2
BRAZIL - NO DATE | JOURNEY TO THE CENTRE OF THE EARTH
Compact Disc
A&M 393 621-2
AUSTRALIA - NO DATE | JOURNEY TO THE CENTRE OF THE EARTH
Compact Disc
A&M, 393 621-2, CD DISCMID161
UK & EUROPE - NO DATE | JOURNEY TO THE CENTRE OF THE EARTH
Compact Disc, Unofficial
NOT ON LABEL RWJ 87531
RUSSIA - NO DATE |
| JOURNEY TO THE CENTRE OF THE EARTH
Compact Cassette
A&M CS-3156
US - NO DATE | JOURNEY TO THE CENTRE OF THE EARTH
Compact Cassette
A&M CS-3621
US - NO DATE | JOURNEY TO THE CENTRE OF THE EARTH
Compact Cassette
HALLMARK RECORDS HSC 3164
UK - NO DATE | JOURNEY TO THE CENTRE OF THE EARTH
Compact Cassette, Unofficial
YESS 002
INDONESIA - NO DATE | JOURNEY TO THE CENTRE OF THE EARTH
Compact Cassette, Unofficial
747 7062
SAUDI ARABIA - NO DATE | JOURNEY TO THE CENTRE OF THE EARTH
Vinyl
A&M 393 156-1
GERMANY - NO DATE |

JOURNEY TO THE CENTRE OF THE EARTH

JOURNEY DISCOGRAPHY

JOURNEY TO THE CENTRE OF THE EARTH - RELEASES WORLDWIDE



- | | | | | | |
|---|--|--|--|---|---|
| JOURNEY TO THE CENTRE OF THE EARTH
8-Track Cartridge
A&M 8T-3621
CANADA 1974 | JOURNEY TO THE CENTRE OF THE EARTH
8-Track Cartridge
A&M 8T-3621
US 1974 | JOURNEY TO THE CENTRE OF THE EARTH
8-Track Cartridge
A&M 8T-3621
US 1974 | JOURNEY TO THE CENTRE OF THE EARTH
8-Track Cartridge
A&M 8T-3621
US 1974 | JOURNEY TO THE CENTRE OF THE EARTH
Compact Cassette
A&M 8C-53621
US 1974 | JOURNEY TO THE CENTRE OF THE EARTH
Compact Cassette
A&M 8C-53621
US 1974 |
| JOURNEY TO THE CENTRE OF THE EARTH
Vinyl
A&M SP 3156, SP-3621, SP 3621
US 1974 | JOURNEY TO THE CENTRE OF THE EARTH
Vinyl
A&M SP-3621, SP 3621
US 1974 | JOURNEY TO THE CENTRE OF THE EARTH
Vinyl
A&M AMLH 63621
ISRAEL 1974 | JOURNEY TO THE CENTRE OF THE EARTH
Vinyl
A&M SP-3621, SP 3621
US 1974 | JOURNEY TO THE CENTRE OF THE EARTH
Vinyl
A&M SLAM-008
MEXICO 1974 | JOURNEY TO THE CENTRE OF THE EARTH
Vinyl
A&M AM 5103
COLOMBIA 1974 |
| JOURNEY TO THE CENTRE OF THE EARTH
Vinyl, Club Edition
A&M, RCA SP-3621, R 104490
US 1974 | JOURNEY TO THE CENTRE OF THE EARTH
Vinyl, DJ promo
A&M AMLH 63621-DJ
UK 1974 | JOURNEY TO THE CENTRE OF THE EARTH
Vinyl
A&M SP-3621
US 1974 | JOURNEY TO THE CENTRE OF THE EARTH
Vinyl, Gatefold Sleeve
A&M SP-3621
JAPAN 1974 | JOURNEY TO THE CENTRE OF THE EARTH
Vinyl, Gatefold Sleeve
A&M SP-3621
CANADA 1974 | JOURNEY TO THE CENTRE OF THE EARTH
Vinyl, Gatefold Sleeve
A&M L 35172, L-35172, AMLH 63621
GERMANY 1974 |
| JOURNEY TO THE CENTRE OF THE EARTH
Vinyl, Gatefold Sleeve
A&M AMLH 63621
UK 1974 | JOURNEY TO THE CENTRE OF THE EARTH
Vinyl, Gatefold Sleeve
A&M AMLH 63621, AM 216
GECE 1974 | JOURNEY TO THE CENTRE OF THE EARTH
Vinyl, Gatefold Sleeve
A&M 87745-1, 87745-E
SPAIN 1974 | JOURNEY TO THE CENTRE OF THE EARTH
Vinyl, Gatefold Sleeve
A&M SP 3621, PPSP 3621
PORTUGAL 1974 | JOURNEY TO THE CENTRE OF THE EARTH
Vinyl, Gatefold Sleeve
A&M SLAM 63631, SLAM 63621
ITALY 1974 | JOURNEY TO THE CENTRE OF THE EARTH
Vinyl, Gatefold Sleeve
A&M L 35172, L-35172, AMLH 63621
AUSTRALIA 1974 |
| JOURNEY TO THE CENTRE OF THE EARTH
Vinyl, Quad, Gatefold Sleeve
A&M QU 53621
US 1974 | JOURNEY TO THE CENTRE OF THE EARTH
Vinyl, Quad
A&M QU 53621
US 1974 | JOURNEY TO THE CENTRE OF THE EARTH
Vinyl, Quad, Promo
A&M QU 53621
US 1974 | JOURNEY TO THE CENTRE OF THE EARTH
Vinyl
A&M SP 69895
CANADA 1974 | JOURNEY TO THE CENTRE OF THE EARTH
Vinyl
A&M SP-3621
US 1974 | JOURNEY TO THE CENTRE OF THE EARTH
Vinyl
A&M SP 3156, SP-3621, SP 3621
US 1974 |
| JOURNEY TO THE CENTRE OF THE EARTH
Vinyl, Gatefold Sleeve
A&M AMP-7049
JAPAN 1979 | JOURNEY TO THE CENTRE OF THE EARTH
Vinyl, Gatefold Sleeve
A&M AMS-5093
VENEZUELA 1979 | JOURNEY TO THE CENTRE OF THE EARTH
Vinyl
A&M AM-7020, AM-7020
VENEZUELA 1980 | JOURNEY TO THE CENTRE OF THE EARTH
Vinyl
SWEET THUNDER EDITION 1
US 1981 | JOURNEY TO THE CENTRE OF THE EARTH
Vinyl, Gatefold Sleeve
A&M AMNP 133
SPAIN 1983 | JOURNEY TO THE CENTRE OF THE EARTH
Compact Cassette
A&M CNP 133
SPAIN 1983 |
| JOURNEY TO THE CENTRE OF THE EARTH
Compact Disc
MOBILE FIDELITY MFCD 848
UK 1987 | VIAJE AL CENTRO DE LA TIERRA
Compact Cassette
A&M 67352
ARGENTINA 1987 | JOURNEY TO THE CENTRE OF THE EARTH
Compact Disc
A&M 393 621-2
UK 1988 | JOURNEY TO THE CENTRE OF THE EARTH
Compact Disc
A&M COMPACT DISC 3156
US 1988 | JOURNEY TO THE CENTRE OF THE EARTH
Vinyl
A&M 393 156-1, 393 156-1
BRAZIL 1988 | JOURNEY TO THE CENTRE OF THE EARTH
Compact Disc
A&M D204010
JAPAN 1989 |
| JOURNEY TO THE CENTRE OF THE EARTH
Compact Disc
A&M, UNIVERSAL 393 621-2
ARGENTINA 1999 | JOURNEY TO THE CENTRE OF THE EARTH
Compact Disc, Ltd. Paper Sleeve
A&M UICY-9262
JAPAN 2003 | JOURNEY TO THE CENTRE OF THE EARTH
Compact Disc, Unofficial
A&M 2 UICY-9262
RUSSIA 2003 | JOURNEY TO THE CENTRE OF THE EARTH
Compact Disc
A&M UICY-94236
JAPAN 2009 | JOURNEY TO THE CENTRE OF THE EARTH
2x Vinyl, Gatefold Sleeve
MUSIC FUSION
EUROPE 2014 | JOURNEY TO THE CENTRE OF THE EARTH
Compact Disc, Unofficial
MUSIC FUSION MFWN1CD
RUSSIA 2014 |
| JOURNEY TO THE CENTRE OF THE EARTH - EXTENDED
Compact Disc, Unofficial
BLUES TIME - NO CODE
RUSSIA 2014 | JOURNEY TO THE CENTRE OF THE EARTH
Vinyl, Gatefold Sleeve
A&M SP 3621
CANADA - NO DATE | JOURNEY TO THE CENTRE OF THE EARTH
2-Files, FLAC
A&M NONE
EUROPE - NO DATE | JOURNEY TO THE CENTRE OF THE EARTH
Compact Disc
KARUSSELL 550 061-2
AUSTRALASIA - NO DATE | JOURNEY TO THE CENTRE OF THE EARTH
Compact Disc
A&M 393 621-2
GERMANY - NO DATE | JOURNEY TO THE CENTRE OF THE EARTH
Compact Disc
KARUSSELL 550 061-2
AUSTRALASIA - NO DATE |
| JOURNEY TO THE CENTRE OF THE EARTH
Compact Disc
A&M CD 3156, 75021 3156 2
USA & CANADA - NO DATE | JOURNEY TO THE CENTRE OF THE EARTH
Compact Disc
A&M CD 3156, 75021 3156 2
USA & CANADA - NO DATE | JOURNEY TO THE CENTRE OF THE EARTH
Compact Disc
A&M CD 3156, 75021 3156 2
USA & CANADA - NO DATE | JOURNEY TO THE CENTRE OF THE EARTH
Compact Disc, Unofficial
2000 FRUITGUM CO CD105462-2
RUSSIA - NO DATE | JOURNEY TO THE CENTRE OF THE EARTH
Compact Disc, Unofficial
A&M 2 393 621-2
RUSSIA - NO DATE | JOURNEY TO THE CENTRE OF THE EARTH
Compact Disc
A&M 393 621-2, CD MID161
UK & EUROPE - NO DATE |
| JOURNEY TO THE CENTRE OF THE EARTH
Vinyl
A&M AMID 127
UK & EUROPE - NO DATE | JOURNEY TO THE CENTRE OF THE EARTH
Vinyl
A&M 393 156-1
SPAIN - NO DATE | JOURNEY TO THE CENTRE OF THE EARTH
Vinyl, Gatefold Sleeve
A&M 270 001
BRAZIL - NO DATE | JOURNEY TO THE CENTRE OF THE EARTH
Vinyl, Gatefold Sleeve
A&M SA&M 2121, SA&MX 2121
BRAZIL - NO DATE | JOURNEY TO THE CENTRE OF THE EARTH
Vinyl, Gatefold Sleeve
A&M AMLH 63621
EUROPE - NO DATE | JOURNEY TO THE CENTRE OF THE EARTH
Vinyl, Gatefold Sleeve
A&M AMLH 63621
UK - NO DATE |

JOURNEY TO THE CENTRE OF THE EARTH



Launched now!

RICK WAKEMAN



Launched now!

www.rwcc.com



The Burning – Motion picture soundtrack

Limited edition signed and numbered box set MFGZ094CD

CD1 – The soundtrack
DVD – The Burning, the movie

- 8 x replica lobby cards
- Replica Japanese press pack
- 6 x replica press pack photos
- A3 repro Japanese poster
- 10" x 8" replica press photo
- Numbered certificate, signed by Rick Wakeman

More luxury box sets available from: www.musicglue.com/bespoke-editions/

G'ole! – Motion picture soundtrack

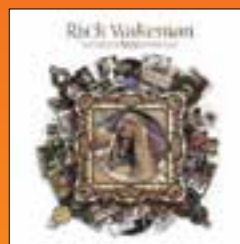
Limited edition signed and numbered box set MFGZ095CD

CD1 – G'ole! Soundtrack to the 1982 FIFA World Cup movie

CD2 – Hero – Soundtrack to the 1986 FIFA World Cup movie + unreleased demos

DVD – G'ole!, the movie

- A3 replica movie poster
- 10" x 8" replica press photo
- A4 reproduction of the 20 page premier programme
- Numbered certificate, signed by Rick Wakeman



Two Sides of Yes

Double CD set. The very best of Yes, Wakeman style
MFGZ013CD



2000 A.D. Into The Future

From 1991... Back in print!
MFGZ033CD



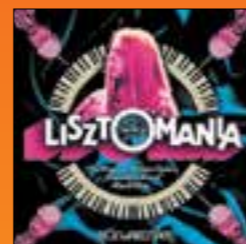
Time Machine

Guest vocalists include Ashley Holt, and Roy Wood
MFGZ019CD



Gas Tank

Double DVD set. Rick's classic 1982 music and chat show
MFGZ020DVD



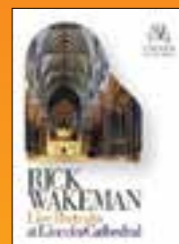
The Real Lisztomania

The soundtrack, as originally intended. Featuring Roger Daltrey
MFGZ028CD



Country Airs

The original recording, with two new tracks
MFGZ014CD



Live Portraits

Recorded live at Lincoln Cathedral – Truly glorious!
MFGZ029



Songs Of Middle Earth

Music inspired by The Lord Of The Rings
MFGZ003CD



Starmus

With Brian May and The English Rock Ensemble. DVD
MFGZ019DVD



Myths and Legends

Double CD set. The expanded 2016 version
MFGZ017CD



Live at the Winterland Theatre 1975

Live in San Francisco
MFGZ015CD



The Phantom of the Opera

Double CD + DVD
MFGZ005CD



Can You Hear Me?

Featuring The English Chamber Choir
HRHC0005



Unleashing The Tethered One

Rare 1975 live recording
MFGZ046CD



Beyond The Planets

With Jeff Wayne and Kevin Peek
MFG009CD



Available from www.rickwakemansmusicemporium.com and all other good music retailers



WAKEMAN MUSIC EMPORIUM



CREDITS

THE ENGLISH ROCK ENSEMBLE THE CREW

Rick Wakeman – Keyboards
Adam Wakeman – Guitars and keyboards
Tony Fernandez – Drums
Dave Colquhoun – Guitars
Matt Pegg – Bass
Ashley Holt – Vocals
Hayley Sanderson – Vocals
Alfie Boe – Special Guest Vocalist
 Orchestra – **The Orion Orchestra**
 Choir – **The English Chamber Choir**
 Conductor – **Guy Protheroe**
 Narrator – **Robert Powell**

Mark Dawson – **Production Manager**
 Erik Jordan – **Keyboards**
 John Chadwick – **Sound Engineer**
 Tom King – **Guitars**
 Malcolm Welch – **Drums**
 Management – **Brian Lane and Valerie Potter, United Stage International Ltd.**
 Promoter – **Stuart Galbraith and Alan Day, Kilimanjaro Live**
 Accountancy – **Tom Dean**
 Legal – **Josephine Michael, Goodge Law**
 Website – **Wayne Smith**
 Merchandise – **Rob Ayling, Colin Murray, Gonzo Multimedia**
 Photos – **Lee Wilkinson**
 Programme Layout – **Martin Robert Cook**

Orchestration from the original *Journey to the Centre of the Earth* by **Will Malone and Danny Beckerman**. Adapted and enhanced by **Guy Protheroe and Ann Manly**.
 The new pieces were also orchestrated by **Guy Protheroe and Ann Manly**.
 All pieces from *Return to the Centre of the Earth* and all choir parts orchestrated by **Rick Wakeman**.

MANY THANKS TO...

Korg Keyboards, Hammond Organ Co.
Rachel Wakeman, Jules Verne



PHOTO FROM THE BOOK "LARGER THAN LIFE: ROCK 'N' ROLL BILLBOARDS OF THE SUNSET STRIP" BY ROBERT LANDAU (ANGEL CITY PRESS, 2012)

Rick Wakeman

THE GRUMPY OLD CHRISTMAS SHOW

A FAR FROM INTIMATE FESTIVE
EVENING OF MUSIC AND LAUGHTER

FEATURING MUSIC FROM
THE NEW CHRISTMAS PORTRAITS ALBUM
AND OTHER CLASSICS FROM
HIS ENORMOUS REPERTOIRE

DECEMBER

- THU 05 **STOKE** VICTORIA HALL
FRI 06 **LONDON** CADOGAN HALL
SAT 07 **WATFORD** COLOSSEUM
MON 09 **BIRMINGHAM** TOWN HALL
TUE 10 **HARROGATE** ROYAL HALL
FRI 13 **BUXTON** OPERA HOUSE
SAT 14 **BRIGHTON** THEATRE ROYAL
SUN 15 **POOLE** LIGHTHOUSE
WED 18 **LIVERPOOL** GRAND CENTRAL
THU 19 **MANCHESTER**
ROYAL NORTHERN
COLLEGE OF MUSIC
FRI 20 **CHELTENHAM** TOWN HALL
SAT 21 **WARWICK** ARTS CENTRE

THE ALBUM 'CHRISTMAS PORTRAITS' OUT 29 NOV

MY
VIP TICKETS + VIP MEET & GREET
PACKAGES AVAILABLE FROM
MYTICKET.CO.UK

RWCC.COM

A KILIMANJARO PRESENTATION

